

COMPATIBLE PLANT LIST FOR ITC TRANSMISSION CORRIDORS

Wire Zone:

Annual Flowers such as:

- Daisies
- Bachelor's Buttons
- Begonias
- Cosmos
- Geraniums
- Impatiens
- Marigolds
- Petunias
- Salvia
- Zinnias

Perennial Flowers

such as:

- Asters
- Black-eyed Susan
- Coralbell
- Phlox
- Tickseed

Ornamental Grasses

such as:

- Bottle Brush grass
- Blue stem (little and/or big) grass
- King Tut grass
- Fiber Optic grass

Near Border Zone:

All plants listed in column one, plus:

- Alberta Spruce
- Birdsnest Spruce
- Boxwood
- Burning Bush
- Coralberry
- Cotoneaster
- Forsythia
- Globe Arborvitae
- Hetz Midget Arborvitae
- Holly
- Hydrangea
- Lilac shrub
- Mugho Pine
- Pfitzer Juniper
- Privet
- Red Twig Dogwood
- Rose of Sharon
- Roses
- Spiraea
- Viburnum
- Weigela
- Yews (Densi and/or Brownii)

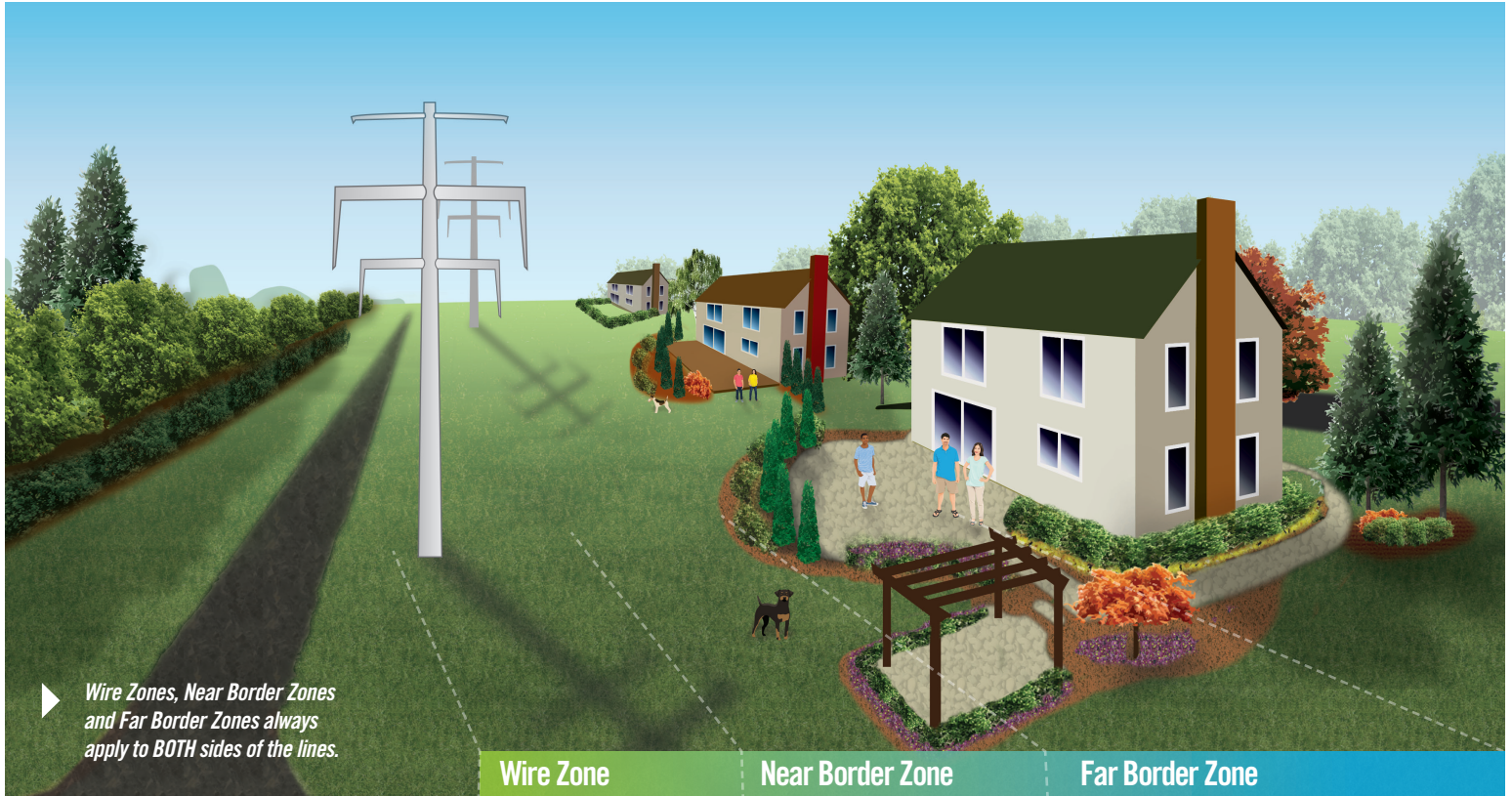
Far Border Zone:

All plants listed in columns one and two, plus:

- Amur Maple tree
- Dogwood tree
- Dwarf Crabapple tree
- Hawthorne tree
- Japanese Maple tree
- Japanese Snowbell tree
- Lilac tree
- Redbud tree
- Serviceberry bush or tree
- Weeping Mulberry tree

Contact ITC Customer Service at 1-877-ITC-ITC9 to ask for a forester to verify compatibility of other species with the transmission system.

This garden example is for illustrative purposes only. The distance between a residence and the transmission corridor will vary depending on the individual property.



COMPATIBLE PLANT LIST FOR ITC TRANSMISSION CORRIDORS

Wire Zone:

Annual Flowers such as:

- Daisies
- Bachelor's Buttons
- Begonias
- Cosmos
- Geraniums
- Impatiens
- Marigolds
- Petunias
- Salvia
- Zinnias

Perennial Flowers

such as:

- Asters
- Black-eyed Susan
- Coralbell
- Phlox
- Tickseed

Ornamental Grasses

such as:

- Bottle Brush grass
- Blue stem (little and/or big) grass
- King Tut grass
- Fiber Optic grass

Near Border Zone:

All plants listed in column one, plus:

- Alberta Spruce
- Birdsnest Spruce
- Boxwood
- Burning Bush
- Coralberry
- Cotoneaster
- Forsythia
- Globe Arborvitae
- Hetz Midget Arborvitae
- Holly
- Hydrangea
- Lilac shrub
- Mugho Pine
- Pfitzer Juniper
- Privet
- Red Twig Dogwood
- Rose of Sharon
- Roses
- Spiraea
- Viburnum
- Weigela
- Yews (Densi and/or Brownii)

Far Border Zone:

All plants listed in columns one and two, plus:

- Amur Maple tree
- Dogwood tree
- Dwarf Crabapple tree
- Hawthorne tree
- Japanese Maple tree
- Japanese Snowbell tree
- Lilac tree
- Redbud tree
- Serviceberry bush or tree
- Weeping Mulberry tree

Contact ITC Customer Service at 1-877-ITC-ITC9 to ask for a forester to verify compatibility of other species with the transmission system.

This garden example is for illustrative purposes only. The distance between a residence and the transmission corridor will vary depending on the individual property.