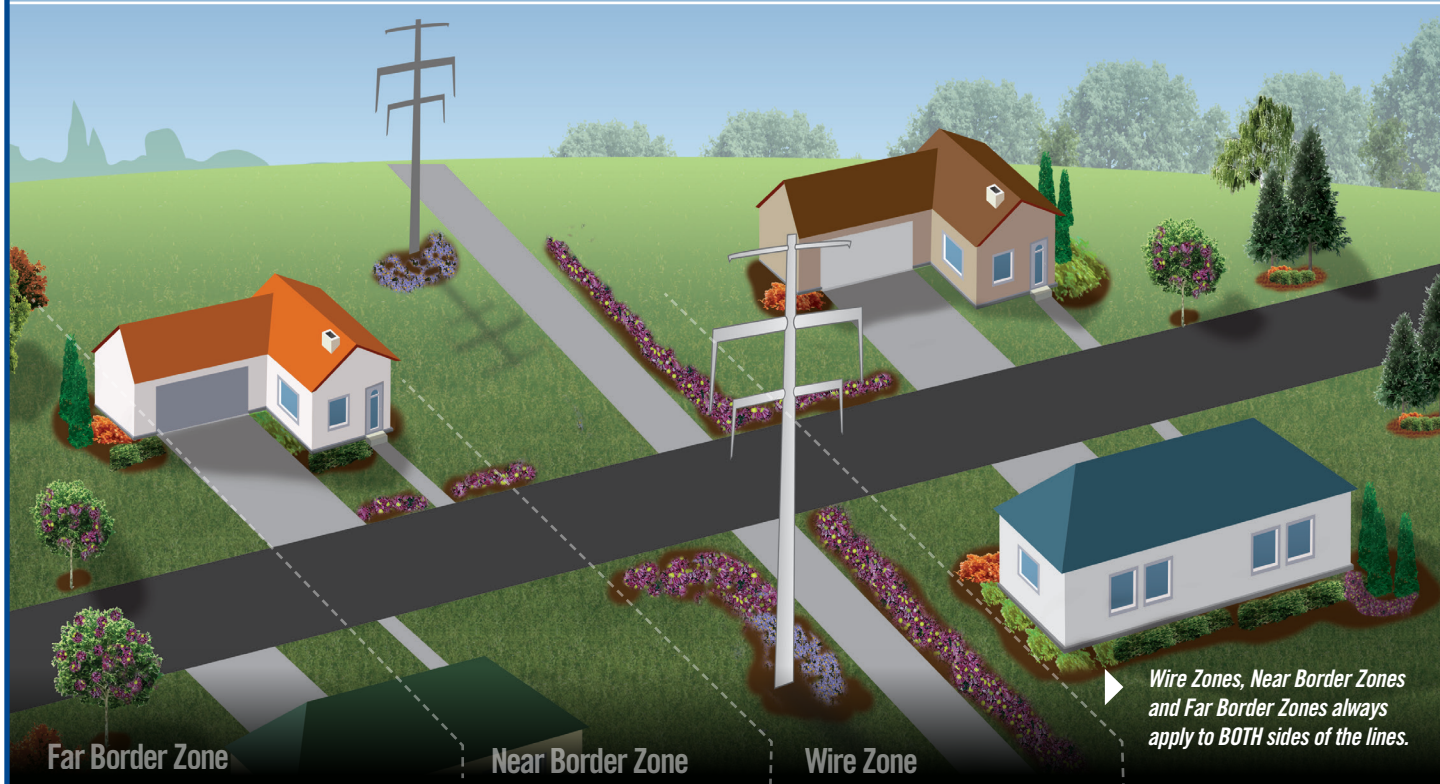


Vegetation Management: Neighborhoods



Far Border Zone:

All plants listed in columns one and two, plus:

Amur Maple tree
Dogwood tree
Dwarf Crabapple tree
Hawthorne tree
Japanese Maple tree
Japanese Snowbell tree
Lilac tree
Redbud tree
Serviceberry bush or tree
Weeping Mulberry tree

Compatible Plant List for ITC Transmission Corridors

Contact ITC Customer Service at 1-877-ITC-ITC9 to ask for a forester to verify compatibility of other species with the transmission system.

*This garden example is for illustrative purposes only.
The distance between a residence and the transmission corridor will vary depending on the individual property.*

Near Border Zone:

All plants listed in column one, plus:

Alberta Spruce
Birdsnest Spruce
Boxwood
Burning Bush
Coralberry
Cotoneaster
Forsythia
Globe Arborvitae
Hetz Midget Arborvitae
Holly
Hydrangea
Lilac shrub
Mugho Pine
Pfitzer Juniper
Privet
Red Twig Dogwood
Rose of Sharon
Roses
Spiraea
Viburnum
Weigela
Yews (Densi and/or Brownii)

Wire Zone:

Annual Flowers such as:

Daisies
Bachelor's Buttons
Begonias
Cosmos
Geraniums
Impatiens
Marigolds
Petunias
Salvia
Zinnias

Perennial Flowers such as:

Asters
Black-eyed Susan
Coralbell
Phlox
Tickseed

Ornamental Grasses such as:

Bottle Brush grass
Blue stem (little and/or big) grass
King Tut grass
Fiber Optic grass

