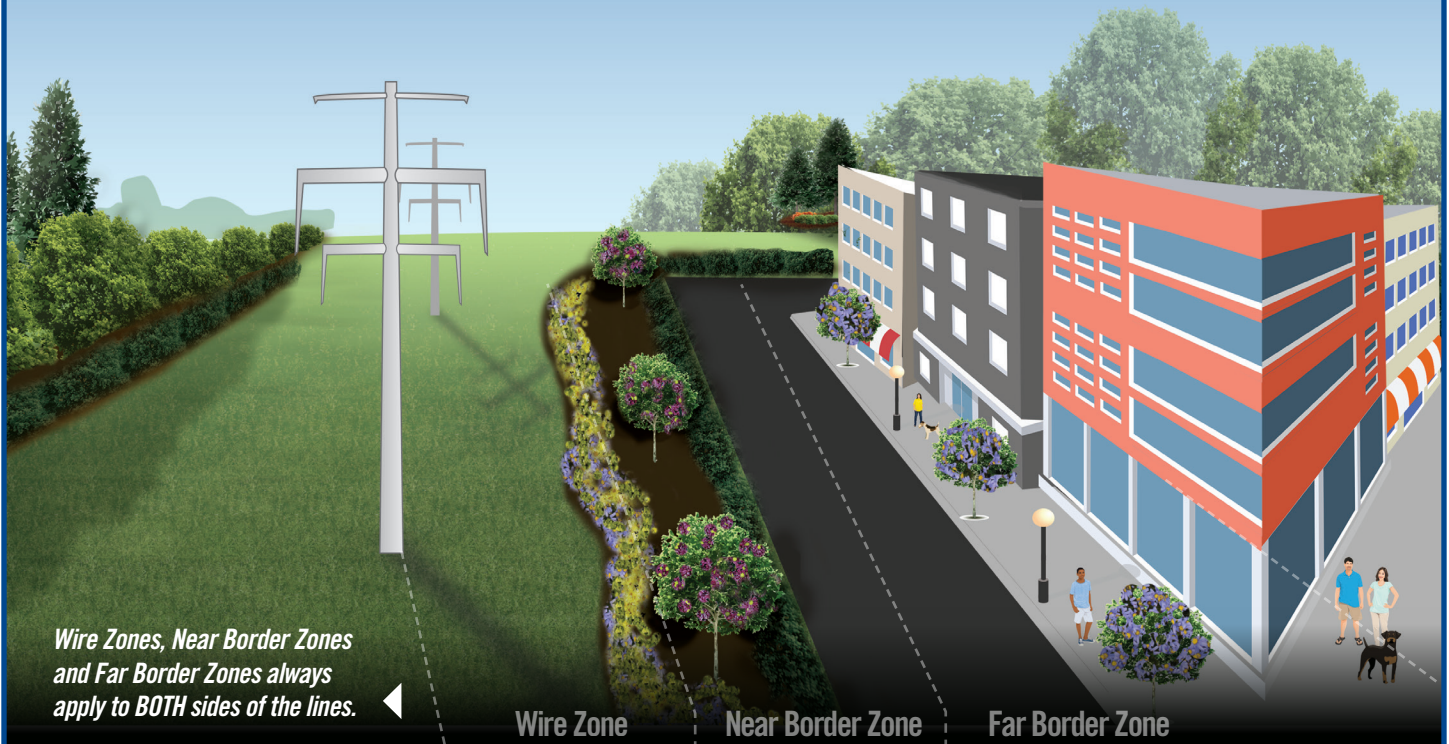


# Vegetation Management: Urban Example



## Compatible Plant List for ITC Transmission Corridors

### Wire Zone:

#### Annual Flowers such as:

Daisies  
Bachelor's Buttons  
Begonias  
Cosmos  
Geraniums  
Impatiens  
Marigolds  
Petunias  
Salvia  
Zinnias

#### Perennial Flowers such as:

Asters  
Black-eyed Susan  
Coralbell  
Phlox  
Tickseed

#### Ornamental Grasses such as:

Bottle Brush grass  
Blue stem (little and/or  
big) grass  
King Tut grass  
Fiber Optic grass

### Near Border Zone:

#### All plants listed in column one, plus:

Alberta Spruce  
Birdsnest Spruce  
Boxwood  
Burning Bush  
Coralberry  
Cotoneaster  
Forsythia  
Globe Arborvitae  
Hetz Midget Arborvitae  
Holly  
Hydrangea  
Lilac shrub  
Mugho Pine  
Pfitzer Juniper  
Privet  
Red Twig Dogwood  
Rose of Sharon  
Roses  
Spiraea  
Viburnum  
Weigela  
Yews (Densi and/or  
Brownii)

### Far Border Zone:

#### All plants listed in columns one and two, plus:

Amur Maple tree  
Dogwood tree  
Dwarf Crabapple tree  
Hawthorne tree  
Japanese Maple tree  
Japanese Snowbell tree  
Lilac tree  
Redbud tree  
Serviceberry bush or tree  
Weeping Mulberry tree

Contact ITC Customer Service at  
1-877-ITC-ITC9 to ask for a forester to  
verify compatibility of other species with  
the transmission system.

*This garden example is for illustrative purposes only.  
The distance between a residence and the transmission  
corridor will vary depending on the individual property.*